

DATOS TÉCNICOS DATASHEET

MARCA : ELECTRO DH

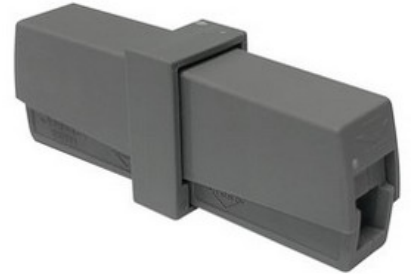
BRAND: ELECTRO DH

CÓDIGO: 10.796/2

CODE: 10.796/2

DESCRIPCIÓN: TERMINAL DE EMPALME A PRESIÓN

DESCRIPTION: PRESSURE JOINT TERMINAL



ESPECIFICACIONES TÉCNICAS

TECHNICAL SPECIFICATIONS

Voltaje nominal:

Rated voltage:

Temperatura de trabajo:

Work temperature:

Resistencia de aislamiento:

Insulation resistance:

Soporte de voltaje:

Withstanding voltage:

Rango de cables:

Wire range:

Cuerpo:

Body:

Muelle:

Spring:

Contactos:

Contacts:

UL 300V/22A IEC 450V/24A

UL 300V/22A IEC 450V/24A

-40°C ~ +105°C

-40°C ~ +105°C

5MΩ / DC500V

5MΩ / DC500V

AC2500V / 1 Min.

AC2500V / 1 Min.

22~12AWG, 0.2~2.5 mm²

22~12AWG, 0.2~2.5 mm²

Poliamida PA66

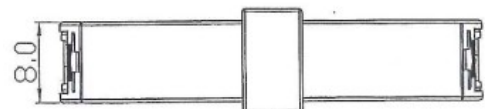
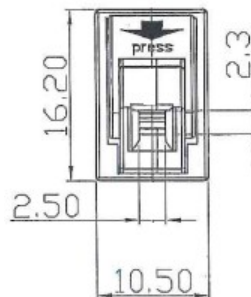
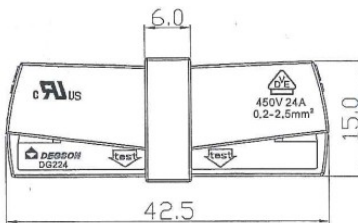
Polyamide PA66

Acero inoxidable

Stainless steel

Cobre plateado

Copper plated



ELECTRO DH s.a.

Fortuna 29
08902 Hospitalet de LL (BCN)

