

DATOS TÉCNICOS

DATASHEET

MARCA / BRAND : ELECTRO DH
CÓDIGO / CODE : 10.794/5

DESCRIPCIÓN: TERMINAL DE CONEXIÓN
DESCRIPTION: CONNECTION TERMINAL

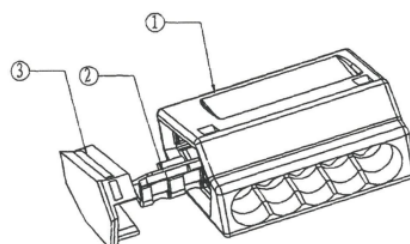
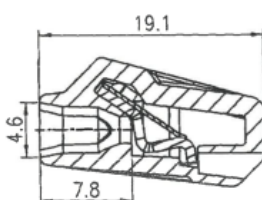
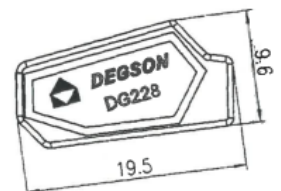
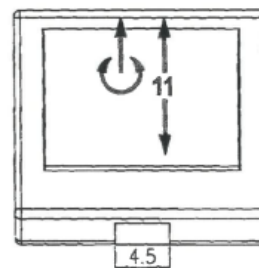
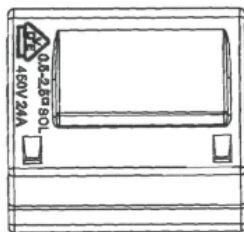
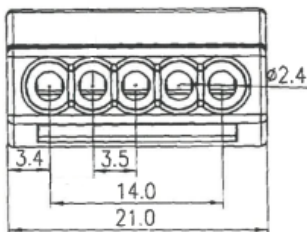
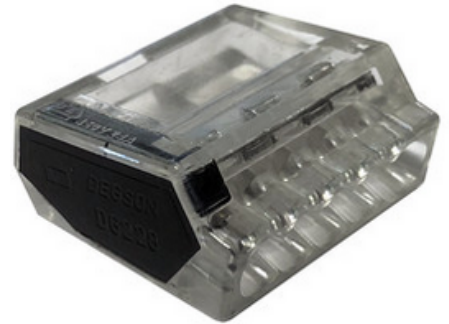
ESPECIFICACIONES TÉCNICAS

TECHNICAL SPECIFICATIONS

Voltaje nominal/Rated voltage:	450V
Intensidad/Current:	24A
Rango de cables/Wire range:	0.5mm² ~ 5mm²
Paso entre polos/Pitch:	3.5mm
N.º Polos/Poles:	5
Longitud de pelado/Stripping length:	10mm ~ 13mm
Voltaje soportado/Withstanding voltage:	AC2500V / 1 min.
Resistencia de aislamiento/Insulation resistance:	5000MΩ/DC1000V
Temperatura de trabajo/Operating temperature:	-40°C ~ +85°C

MATERIAL/MATERIAL

- | | |
|--------------------------------------|---|
| 1. Alojamiento/Housing: | PC UL94V-2 |
| 2. Conductor/Current carrier: | Acero inoxidable SnCe
Stainless steel SnCe |
| 3. Tapa/Cover: | PC UL94V-2 |



ELECTRO DH s.a.

Fortuna 29
08902 Hospitalet de LL (BCN)

